

X9-1

<https://www.gigahertz-optik.com/de-de/produkt/x9sub1sub/>

Produkt-Tags:



Überblick

The X9₁ (Xnine one) meter plus VL-3704-4 and/or LDM-9901-4 light detector forms a compact hand-held photometer for both illuminance (lux)* and luminance (cd/m²)* measurement in general lighting applications. The X9₁ lightmeter design features separate meter and cable connected detector heads one for illuminance and one for luminance measurements.
* SI units of measurement



Illuminance Meter

The VL-3704-4 Illuminance detector is fitted with a precise photometric correction filter and cosine diffuser. Its $V(\lambda)$ spectral sensitivity matches the DIN CIE standard f1' error to equal or better than 5% meeting the DIN Class B specification. Its 20 mm low profile height allows measurement close to the reference level.

Breitband Fotometer

Luminance Meter

The LDM-9901-4 Luminance detector is designed with a chromatically corrected lens for a measurement distance independent $V(\lambda)$ match of f1' error equal to or better than 5% to the DIN CIE standard. Its field of view is 1.1° with a measurement distance range 40 cm to infinity. To target the object to be measured, the LDM-9901 has a notch and bead sight which has marks for near and far field distances.

Compact Size for Mobile Use

1 meter is a hand-held battery operated meter with 9 mm high character LCD display for easy viewing. Its high linearity current to voltage amplifier offers automatically (Manual?) selected gain ranges. Operating the X9₁ is simple. Once set-up all settings are stored and recalled on next power-up unless settings are changed. The light detector connected is recognized by the meter and set to the associated measurement quantity. The meter is operated by a standard 9 V battery.



USA Version

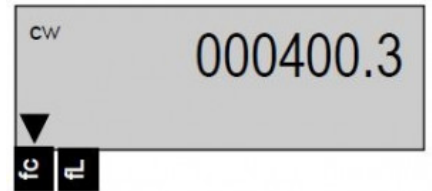
Measurement in footcandles and footlamberts

The US version of the X9₁ (Xnine one) meter plus VL-3704-4 and LDM-9901-4 light detector measures illuminance in footcandles (fc) and luminance in footlamberts (fL).

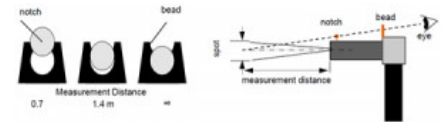
Custom Labeling Welcome



Large Digital Display with Measurement Unit and indication of cw or peak hold measurement mode



Model X91-US for Measurements in Footcandles and Footlamberts



Measurement Distance (m)	0.5	0.7	1	3	5	10	50	100
Spot Diameter (mm)	31	35	41	81	120	220	1000	2000

LDM-9901 Sighting Principle


Technische Daten

Spezifikationen

Aufbau	Compact size hand-held housing
Anzeige	6 character LCD, Character height 9mm. Indication of measurement quantity, cw or peak measurement mode, stop, battery low.
Detektorschnittstelle	ITT (-4) type connector. Connected detector identification (VL-3704-4 and LDM-9901-4 only)
CW Integrationszeit	500 ms
Frequenzbereich	0.166 Hz to >300MHz
Spitzenwert Haltung	Peak measurement value frozen on display. Erased with reset button. Peak mode indicated on display
Parametereinstellung	Via RS232 interface
Bedieneinheit	2 keys, menu system
Schnittstelle	RS232, 9600 Baud, 8 8D pin plug Hirose type 3260-8S1, Power supply option recommended for remote control operation
Temperaturbereich	operating: 5 to 40°C, storage: -10 to 50° C
Abmessungen	Lens diameter 20mm, cable length ? m / ??? g
Spannungsversorgung	9V one-piece battery, operating time about 100 hrs Operation from AC plug-in power supply 230V/50Hz on option by erase of battery
VL-3704-4 1)	Illuminance detector with cosine diffuser
f1' (spektrale Fehlanpassung)	≤ 5 %
f2 (cos getreue Bewertung)	≤ 3 %
LDM-9901-4 1)	Luminance detector with 1.1° field of view, notch and bead sight for object targeting
Messabstand	0.4m to infinitive

	kompatibel
	kompatibel
Garantie	12 months
Beleuchtungsstärke	0.5 to 199999 lx with 0.01 lx resolution
Leuchtdichte	2.5 to 199999 cd/m ²
1)	for more detailed specification please check the datasheets of the VL-3704 and LDM-990 detector heads
	NULL
	NULL

Konfigurierbar mit

Produktname	Produktbild	Beschreibung	Zum Produkt
K-xx-C		Kalibrierung der Signalstrom Empfindlichkeit von Optometern. Features: Kalibrierung aller Verstärkungsstufen, rückführbar kalibrierte Stromquelle, Kalibrierzertifikat	https://www.gigahertz-optik.com/de-de/produkt/k-xx-c/

Bestellinformationen

Artikel-Nr	Modell	Beschreibung
Produkt		
15295674	X9-1	Meter with battery and manual
Re-Kalibrierung		
15300700	K-X9n-C	Electronic calibration of X9 series meters
15300692	K-VL3704-I	Illuminance calibration of VL-3704
15300377	K-LDM9801-I	Luminance calibration of LDM-9901
Zubehör		
	VL-3704-4	Illuminance detector with calibration certificate
	LDM-9901-4	Luminance detector with calibration certificate
15295377	VL-37-Z01	Adapter with bubble level for use as stand or tripod mount
15295367	LDM-9901-Z01	Adapter plate to mount the LDM-9901 onto standards tripods
15295917	LDM-9901-Z02	Ambient light shade for LDM-9901
15295289	X9-Z01	RS232 interface adapter cable to connect X9 series meters with 9PIN SUB-D standard sockets to PCs
15295531	X9-Z02	External power supply for X9 series meters including meter modification (cancels battery operation)

Artikel-Nr	Modell	Beschreibung
15296383	X9-Z05	Plug-in power supply for AC operation of X9 series meters. Connects to RS232 socket of the meter (prevents remote control operation via RS232 interface). 100VAC - 240VAC; 5VDC
15295292	BH0-04	Hard case to carry and store one X9_1 or X1_1 with one of VL-3704 and LDM-9901

Kontakt, Kalibrierung, Service & Support

Wir sind weltweit für unsere hervorragende technische Beratung und unseren Kundendienst bekannt. Kontaktieren Sie uns, um gemeinsam die beste Lösung für Sie zu finden. Unsere Leistungen umfassen:

- Technische Beratung & Verkauf
- After-Sales-Unterstützung
- Kalibrierungen & Re-Kalibrierungen ([ISO/IEC 17025 Calibration Services](#), [Werkskalibrierung](#), [Calibration of Third-Party Products](#))
- Reparaturen und Aktualisierungen
- OEM & Machbarkeitsberatung bei kundenspezifischen Lösungen

[Senden Sie uns ihre Anfrage](#), oder kontaktieren Sie uns telefonisch. Wir würden uns auch über Ihr Feedback freuen oder bewerten Sie uns auf [Google](#).

Gigahertz Optik GmbH

Tel.: +49 (0)8193-93700-0
Fax: +49 (0)8193-93700-50
info@gigahertz-optik.de

An der Kälberweide 12
82299 Türkenfeld, Germany