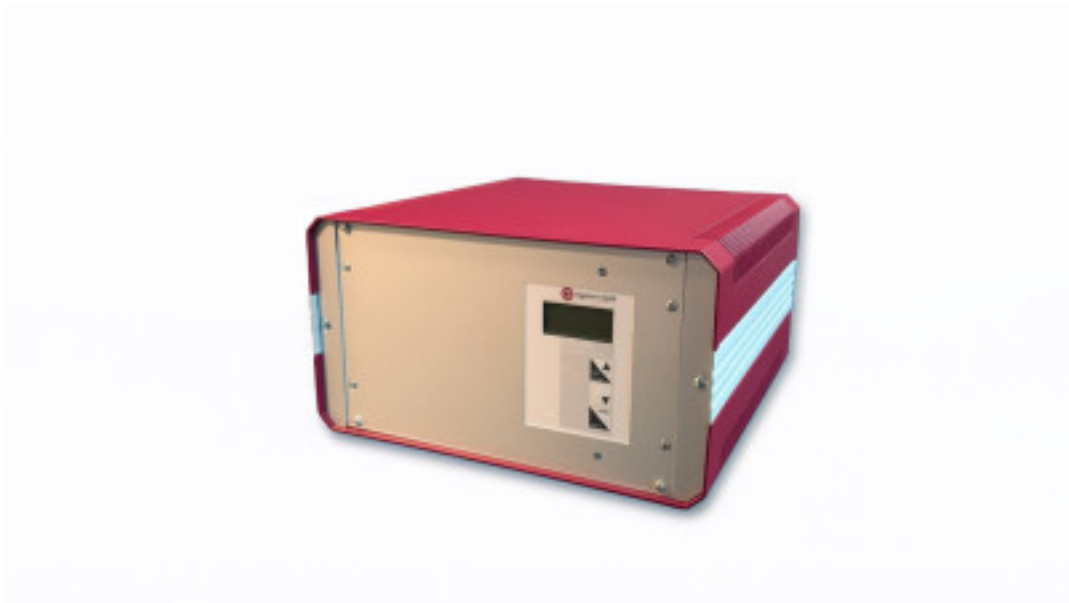


# LPS-250

<https://www.gigahertz-optik.com/en-us/product/lps-250/>

**Product tags:**



## Description

### LPS-250 Single-Channel 250W Lamp Power Supply

The LPS-250 is a microprocessor-based power supply for operating light sources up to 250 W, requiring high-resolution, freely adjustable, and low-noise control, as is the case with calibration standards or auxiliary lamps.

### LPS-250 Interface Operation

It is designed for full interface operation via RS232 or RS485, but also for manual operation using push buttons. A backlit display shows the current settings and allows parameters such as rise time or nominal current to be adjusted.

### High Current Resolution and Precise Current Control

The device is built on a high-resolution 16-bit digital/analog converter, which enables precise current regulation. As already mentioned, the rise time can be freely selected, which is particularly necessary for protecting calibration standards.

### Rackmount or Stand-Alone

The LPS-250 can be configured as a stand-alone power supply with the BTH19/2 housing.



*Single channel 250W, 24V Lamp Power Supply*



*LPS-250 front panel including BTH-19/2 table housing*



*LPS-250 rack mount version rear view*



*LPS-250 including BTH-19/2 table housing*

# Specifications








## General

Short description	Precise frequency modulated power supply for constant current operation of tungsten halogen or other lamps in remote control operation. Low ripple signal.
Main features	16 bit DAC current control. Time set able on/off ramp. RS232 or RS485 Interface. Display and buttons for Manual operation. Housing for 19 Inch rack installation. Software development kit.
Measurement range	-
Typical applications	Precision lamp power supply for calibration lamps up to 250 W.
Calibration	Current factory calibration

## Product

Output power	LPS-250:  AC-supply (160 - 240) VAC: 270 W / (0 - 15) A / max. 26 V AC-supply 85 VAC: 150 W / (0 - 15) A / max. 26 V  LPS-250A:  AC-supply (100 - 240) VAC: 270 W / (0 - 15) A / max. 26 V AC-supply 85 VAC: 220 W / (0 - 15) A / max. 26 V
Output Interfaces	banana plug 4 mm
Resolution of output current	0.3 mA
Temperature range	$\pm 0.3$ mA/°K
Stability	$\pm 1$ mA (60 minutes after switch on output current constant for 8 hours by constant environment)
Display	LCD-Grafic display 97x32 pixel: Size: 14.3 mm x 35.8 mm LED backlight: switch on/off Text display: 4 lines each 14 chars
Key pad	3 keys:  enter/menu  down  up/light on/off
Control Input	(4 – 30) VDC, input resistance 20 kOhm, opto coupler isolated, plug 2.1 mm/5.0 mm
Power Supply	(85 - 240) VAC  (50 – 60) Hz (output power derating!)
Inrush current	22A (115VAC), 40A (230VAC)
<b>Miscellaneous</b>	
Interface	Standard: RS232  Optional: RS485
Safety class	1
Temperature range	Operation: (10 to 35) °C (with free air flow)  Storage: (-10 to 50) °C
Weight	3 kg

## Configurable with

Product Name	Product Image	Description	Go to product
S-SDK-LPS		Software Development Kit for LPS variants (power supply) for own software implementation.	<a href="https://www.gigahertz-optik.com/en-us/product/s-sdk-lps/">https://www.gigahertz-optik.com/en-us/product/s-sdk-lps/</a>
BTH-19		Bench-top and rack housing for 3HE rack modules. Features: The bench-top housings are available in half, third or full 19" widths. Power supply modules for (110-230) V, 50/60 Hz with low DC voltages for both external devices and those within the housing.	<a href="https://www.gigahertz-optik.com/en-us/product/bth-19/">https://www.gigahertz-optik.com/en-us/product/bth-19/</a>
SC-05		System control for versatile light measurement applications	<a href="https://www.gigahertz-optik.com/en-us/product/sc-05/">https://www.gigahertz-optik.com/en-us/product/sc-05/</a>
BN-LH250		Calibration Lamp for Spectral Irradiance and Illuminance	<a href="https://www.gigahertz-optik.com/en-us/product/bn-lh250/">https://www.gigahertz-optik.com/en-us/product/bn-lh250/</a>
BN-LHSF-2P-20		Calibration standard lamp for 2π spectral flux, total flux and CCT	<a href="https://www.gigahertz-optik.com/en-us/product/bn-lhsf-2p-20/">https://www.gigahertz-optik.com/en-us/product/bn-lhsf-2p-20/</a>
CLS-21		Collimator Light Source for Integrating Spheres	<a href="https://www.gigahertz-optik.com/en-us/product/cls-21/">https://www.gigahertz-optik.com/en-us/product/cls-21/</a>
BN-LHSF-AP-100		Calibration standard lamp for 4π spectral flux, total flux and CCT	<a href="https://www.gigahertz-optik.com/en-us/product/bn-lhsf-ap-100/">https://www.gigahertz-optik.com/en-us/product/bn-lhsf-ap-100/</a>

## Purchasing information

Article-Nr	Modell	Description
<b>Product</b>		
101092	LPS-250	Power supply module for 115 to 230VAC. Rack-mount housing
15296949	LPS-250A	Power supply module for 90VAC main voltage. Rack-mount housing
<b>Software</b>		

<b>Article-Nr</b>	<b>Modell</b>	<b>Description</b>
15298224	S-SDK-LPS	Software Development Kit for the implementation of a LPS or variants into custom made software
<b>Accessories</b>		
101136	BTH-19/2	Bench top housing for LPS-250 module. 1/2 19" width

## Contact, Calibration, Service & Support

We are known worldwide for excellent technical consulting and after sales support. Contact us to find together the best solution for you. Our services:

- Technical Consulting & Sales
- After-Sales Support
- Calibrations & Re-Calibrations ([ISO/IEC 17025 Calibration Services](#), [factory calibration](#), [Calibration of Third-Party Products](#))
- Repairs & Updates
- OEM & Feasibility Consulting of Customized Solutions

[Send us your inquiry](#) or contact us by phone or e-mail. We would welcome your feedback too or review us on [Google](#).

### Gigahertz Optik GmbH (Headquarter)

Tel.: +49 (0)8193-93700-0  
Fax: +49 (0)8193-93700-50  
[info@gigahertz-optik.de](mailto:info@gigahertz-optik.de)

An der Kaelberweide 12  
82299 Tuerkenfeld, Germany

### Gigahertz-Optik, Inc. (US office)

Phone: +1-978-462-1818  
[info-us@gigahertz-optik.com](mailto:info-us@gigahertz-optik.com)

Boston North Technology Park  
Bldg B - Ste 205  
Amesbury, MA 01913 USA